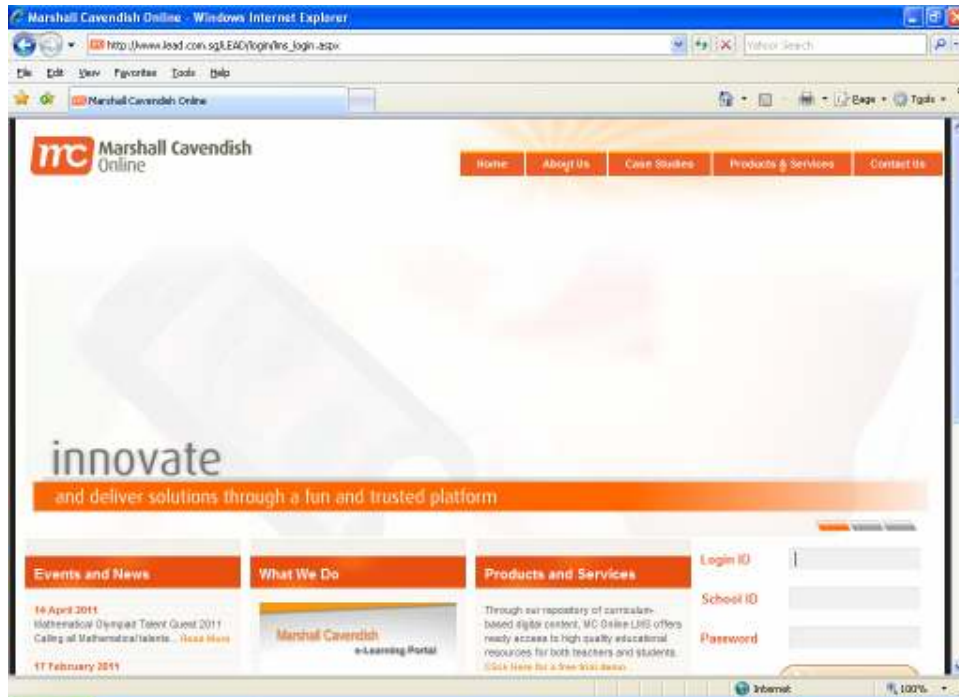


Instruction to log into Lead Portal (e Learning)

Step 1

Open the Internet Explorer and type in www.lead.com.sg



Step2

Student will required to log into the lead portal

Login ID: *Student NRIC*

School ID: NVBPS

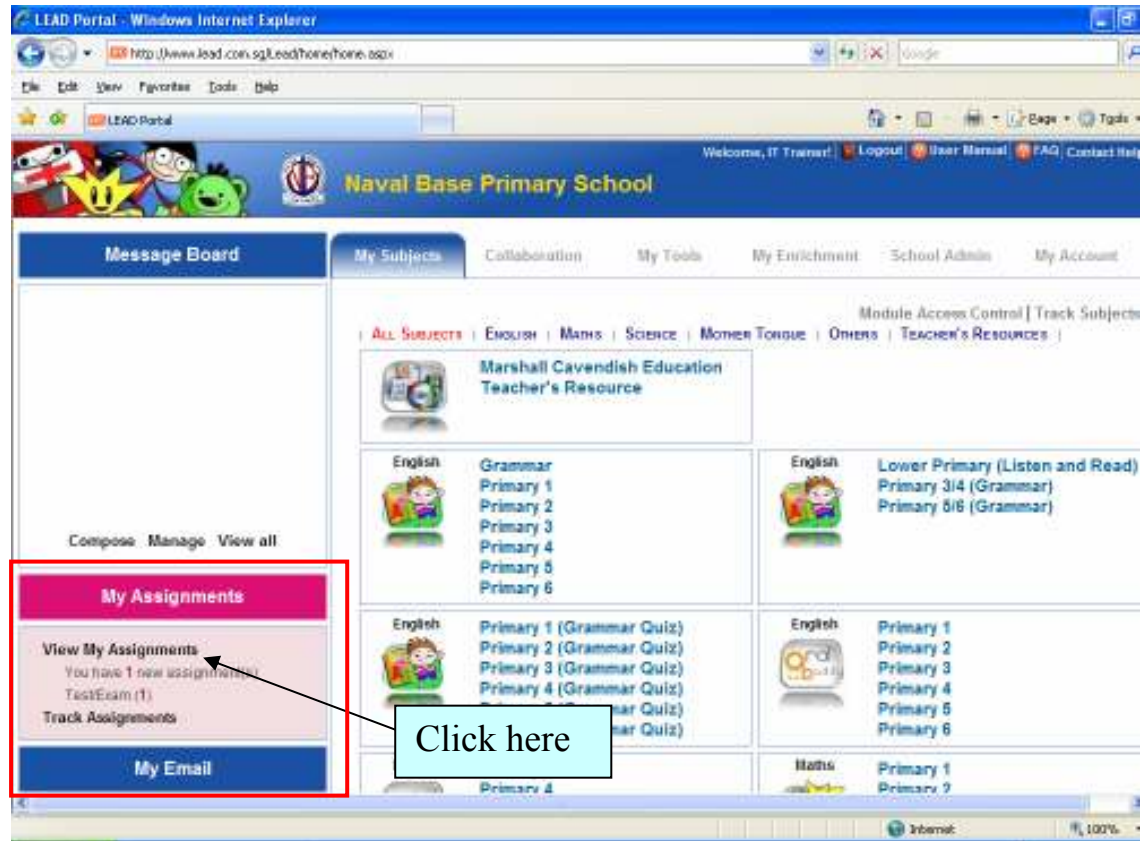
Password: mconline

Next, Click **Login**



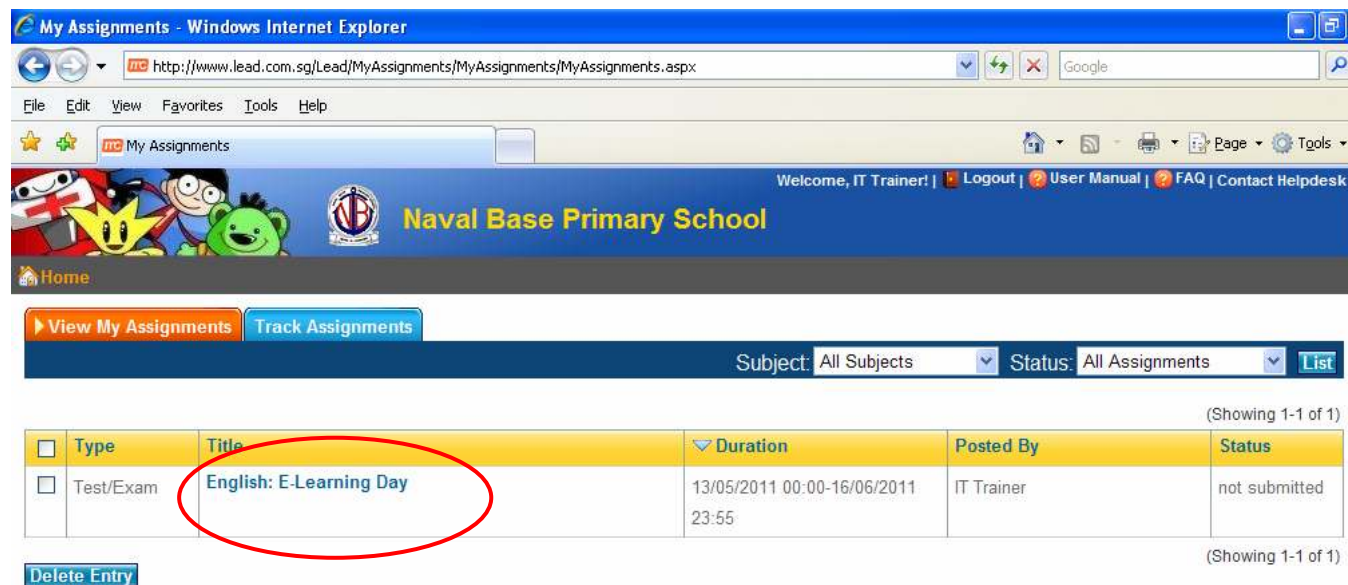
Step 3

Under My Assignments, click on “View My Assignments”



Step 4

Here is where assignments are being given to the students.



Step 5

To begin the assignment, click on the title of the assignment. Students are required to answer the entire question before clicking the submit button.

My Assignments - Windows Internet Explorer
http://www.lead.com.sg/Lead/MyAssignments/MyAssignments/MyAssignments.aspx

Welcome, IT Trainer! | Logout | User Manual | FAQ | Contact Helpdesk

Naval Base Primary School

View My Assignments Track Assignments

Subject: All Subjects Status: All Assignments List

Type	Title	Duration	Posted By	Status
Test/Exam	English: E-Learning Day	13/05/2011 00:00-16/06/2011 23:55	IT Trainer	not submitted

Delete Entry

(Showing 1-1 of 1)

Click on the assignment title

Step 6

Click Yes to continue.

The test will end on 21/5/2011.

Continue to take test?

Yes No

Step 7

Select the correct answer and go to the next questions.

Answer the following questions.

1) When would the butterfly visit Morgan?
The butterfly would visit Morgan _____.

(1)

at night

in the evening

in the morning

in the afternoon

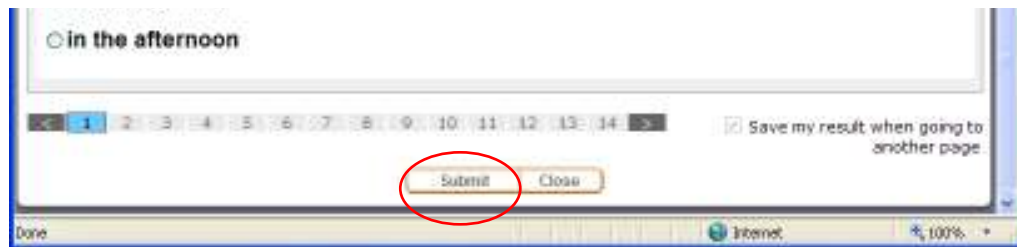
Choose the correct answer

Next questions

Save my result when going to another page.

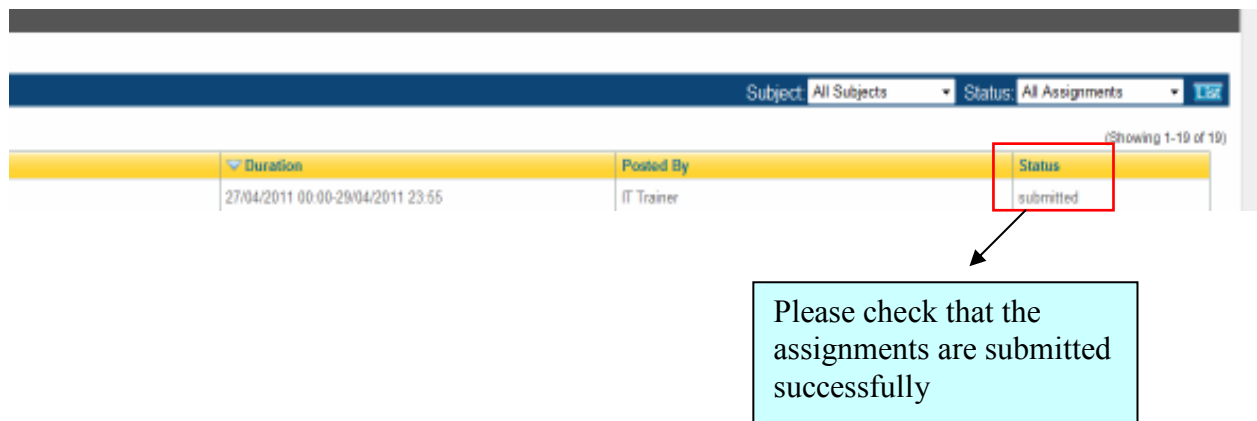
Step 8

Once you have completed **all** the questions, remember to click “**Submit**”



Step 9

To check if the student successfully completed the assignments, the **Status** tab will appear as “*submitted*”



Technical Assistance

If there is any issue with regards to the login in process, please contact the school IT Trainer at 67537114.